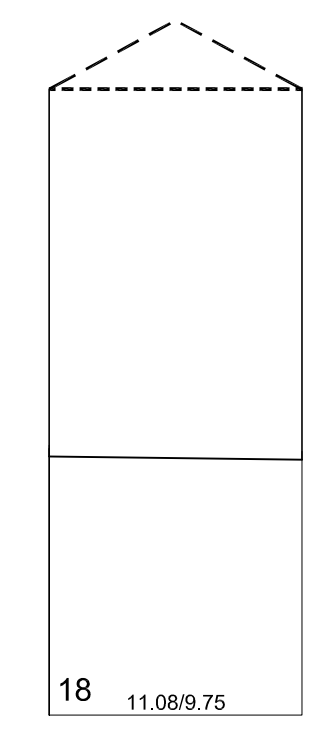




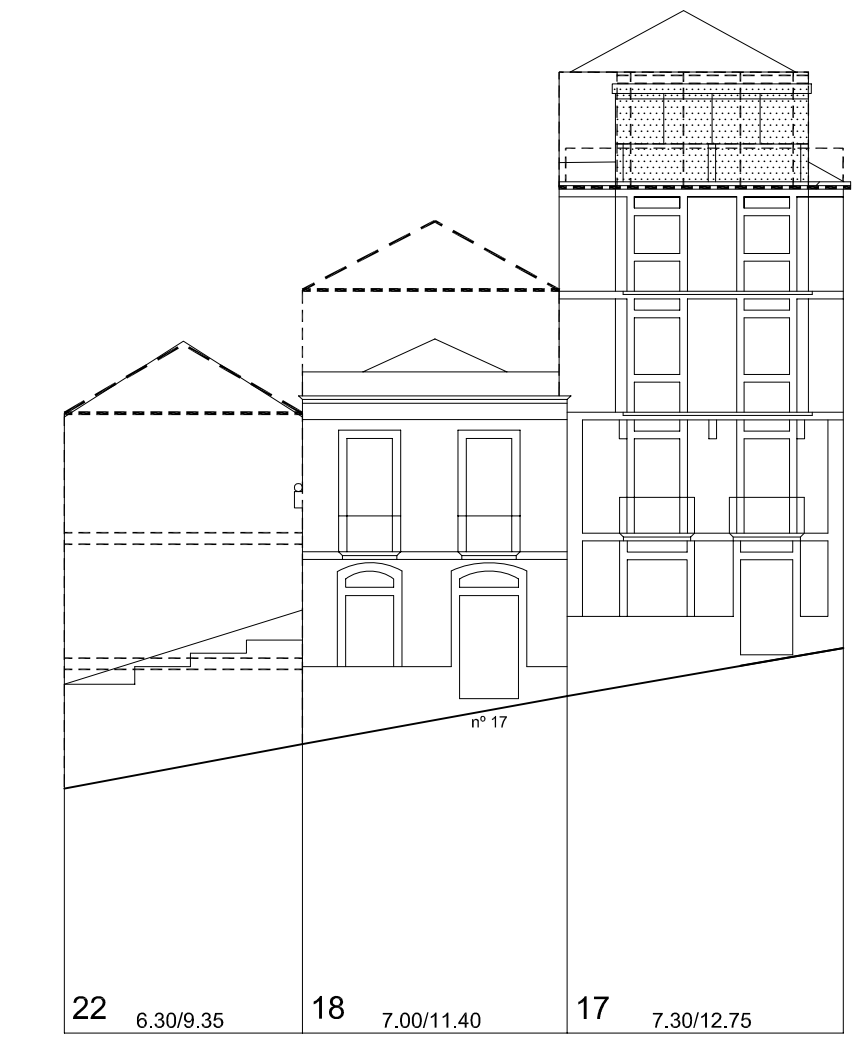
02 5.46/8.25 01 7.78/8.10 01 20 1.88/8.30 11.07/10.30 06 8.78/10.40 07 9.41/19.25 10 4.73/19.50 11 13.30/19.35 12 13 19 10.85/6.95 18 10.60/7.05 18 11.08/9.60 22 6.42/9.95

Rúa de Eduardo Chao



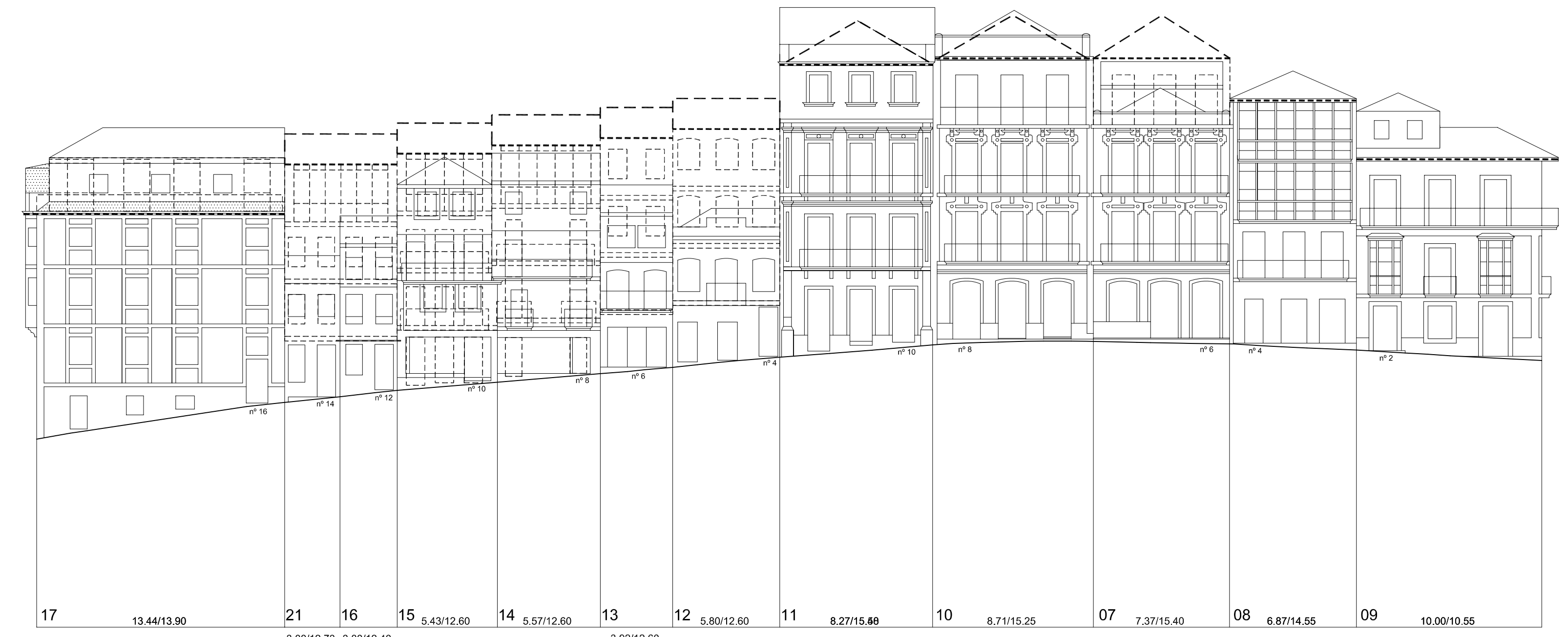
18 11.08/9.75

Rúa de Eduardo Chao



22 6.30/9.35 18 7.00/11.40 17 7.30/12.75

Rúa Alta



17 13.44/13.90 21 3.00/12.73 16 3.00/12.40 15 5.43/12.60 14 5.57/12.60 13 3.92/12.60 12 5.80/12.60 11 8.27/15.80 10 8.71/15.25 07 7.37/15.40 08 6.87/14.55 09 10.00/10.55

Rúa Alta

Rúa San Vicente



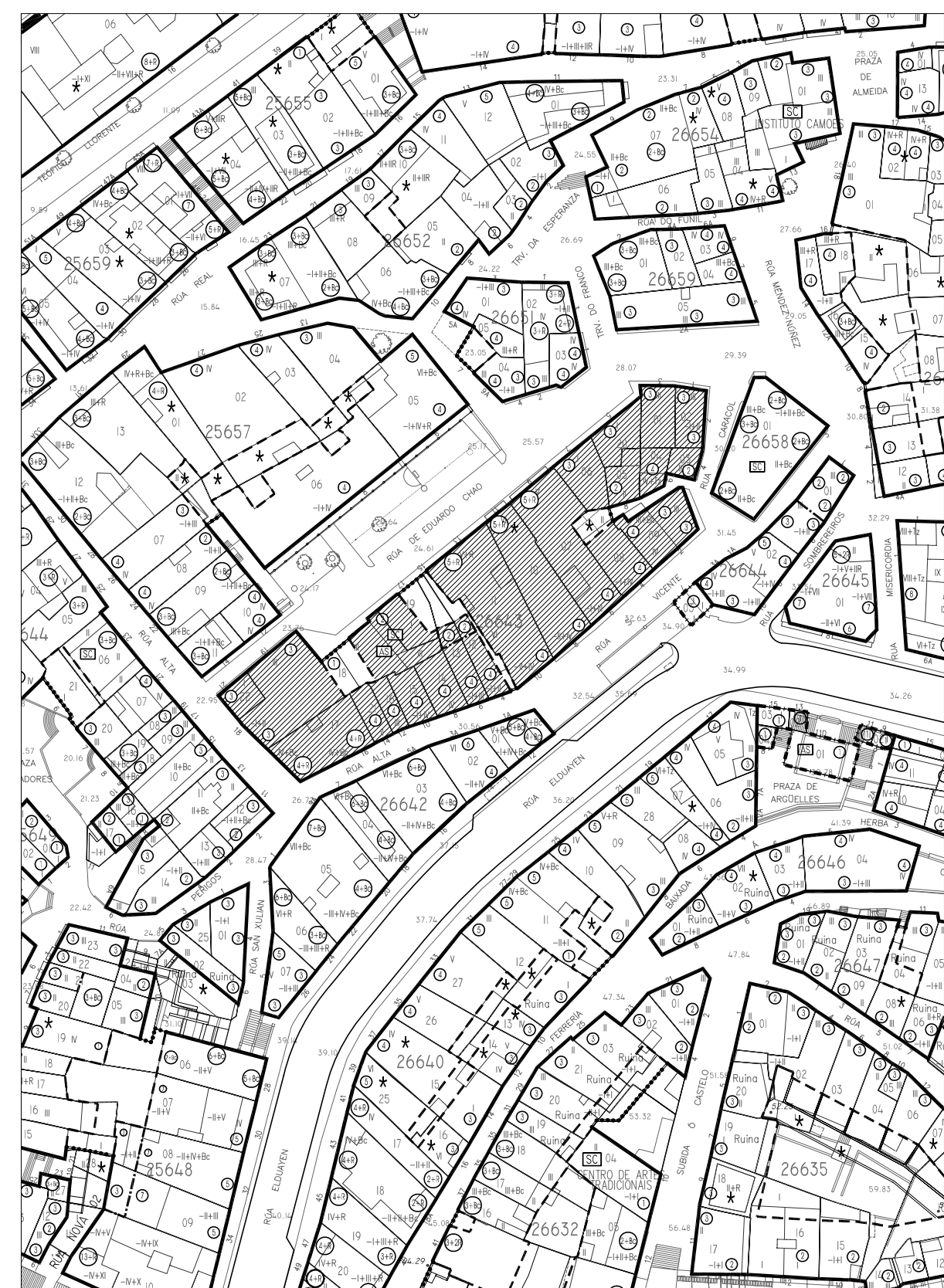
09 7.48/10.90


Rúa Caracol



09 12.78/11.35 08 2.63/7.00 05 5.69/6.00 04 6.53/11.20 03 5.31/5.83

Rúa Caracol



|   |                                    |
|---|------------------------------------|
|  <p>PLAN ESPECIAL DE PROTECCIÓN E REFORMA INTERIOR<br/>CASCO VELLO DE VIGO</p> | <p>FASE:<br/>APROB. DEFINITIVA</p> |
|   | <p>PLANOS Nº<br/>4.27</p>          |
| <p>PLANOS DE ORDENACIÓN<br/>TÍTULO:<br/>ALZADOS PROPOSTOS, COUZADA 26643</p>  | <p>ESCALA<br/>1/200</p>            |
| <p>CONSULTORA GALEGA, S.L.<br/>RÚA SAN MARTÍN, 3-B 36002 PONTEVEDRA - T. 986 85 89 57 - FAX. 986 85 89 58 - E-mail: consultora@consultoragallega.com</p>            | <p>DATA:<br/>DECEMBRO 2006</p>     |